

FOR LEASE

4915 Ehrlich Road
Tampa, FL 33624



7,000 SF MEDICAL/OFFICE BUILDING

- \$19.00 SF
- Conveniently located between Veteran's Expressway and North Dale Mabry Highway
- Excellent visibility with prominent monument signage
- 4 per 1,000 sf parking ratio
- Large waiting area with convenient patient check in and check out stations
- Efficient layout for patient convenience including "pod" design featuring 3 exam rooms each with restroom
- Lab area and x-ray room
- Second floor break area and library
- Large storage area
- Separate side entrance for staff

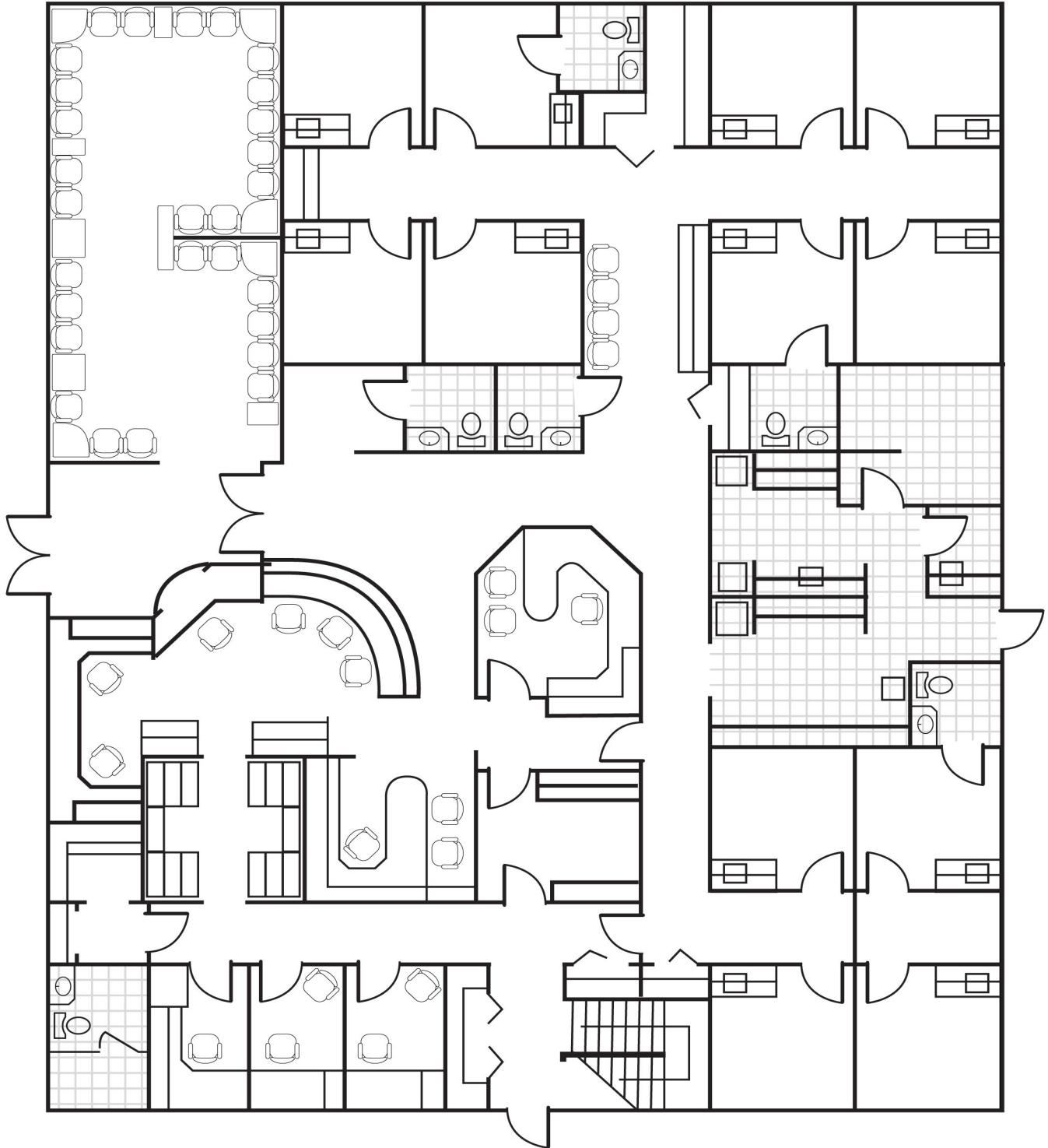


For Additional Information Contact:

Jan Chaffee • 813.335.3951

JC Commercial Brokers
Licensed Real Estate Broker

4915 Ehrlich Road
Tampa, FL 33624
7,000 Sq. Ft.



For Additional Information Contact:

Jan Chaffee • 813.335.3951

JC Commercial Brokers
Licensed Real Estate Broker