

WHITEWATER FENDERS



Whitewater Family of Fenders comes in 7 models and available in standard 6', 8', 10' and 12' lengths.

Best Fender warranty in the marine industry.

**Limited
10 year
warranty!**



DOCK FENDER SOLUTIONS:

Whitewater Dock Fenders are designed to provide a protective barrier between hard surfaces, such as docks, seawalls, pilings and the hulls of boats and yachts.

The fenders may be mounted horizontally or vertically on concrete walls or pilings, wooden pilings or docks and wharves.

Whitewater Dock Fenders provide maximum protection for a boat's hull, but will also stand up to the harsh marine environment. The outer shell is made of a flexible PVC with spun polyester fiber attached to recycled plastic lumber.

Floating Docks
& Marina Systems



WHITEWATER DOCKS



sales@whitewaterdocks.com

www.whitewaterdocks.com

Floating Docks
& Marina Systems

**WHITEWATER
DOCKS**



A new direction with a world of difference

Whitewater Dock



**LIMITED
10
YEAR
WARRANTY!**



SIZES:

- 6' X 16' • 6' X 20'
- 6' X 24' • 6' X 30'
- 6' X 40' • 8' X 16' • 8' X 20'
- 8' X 24' • 8' X 30' • 8' X 40'

*Customized docks
available upon request.*

*Some limitations
may apply.*

- Whitewater Frame Dock framework is constructed entirely of High Density Polyethylene (HDPE) pipe.
- High Density Polyethylene (HDPE) pipe is leakproof, corrosion and chemical resistant, flexible and fatigue resistant.
- HDPE pipe range in sizes from 14" to 24" diameter and 1/2" wall thickness depending on load capacity and buoyancy.
- High quality, premium performance, extremely rugged marine docking.
- Docks can be manufactured in lengths of up to 50' and widths of up to 8' or more.
- Commercial grade construction and can be utilized as simple recreational layouts to full scale marinas.
- Low maintenance and backed by 10- year limited warranty.
- Whitewater Dock frame can be purchased without decking for the do-it-yourself avid carpenter.

Mariner Dock

SIZES:

- 6' X 16' • 6' X 20'
- 6' X 24' • 6' X 30'
- 8' X 10' • 8' X 16'
- 8' X 20'
- 8' X 24' • 8' X 30'

*Customized docks
available upon request.*

*Some limitations
may apply.*

- Mariner Dock floatation is constructed using Linear-Low Density Polyethylene (LLDPE) and the cavity is filled with Expanded Polystyrene (EPS) for maximum floatation.
- Long lasting and extremely rugged floatation system.
- Positive floatation and virtually unsinkable.
- With no exposed foam floatation, our docks are environmentally friendly.

- Low maintenance backed by 10 year limited warranty.
- Mariner Dock floatation units can be purchased as a cost effective alternative for the do-it-yourself customers.

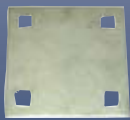
**LIMITED
10 YEAR
WARRANTY!**



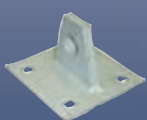
HARDWARE



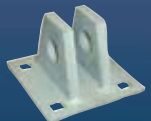
CD-001
1 1/2" X 5" X 1/4"
Backer Plate



CD-002
5" X 5" X 1/4"
Backer Plate



CD-004
5" X 5" X 1/4"
T-Hinge 1 Tab (Male)



CD-005
5" X 5" X 1/4"
T-Hinge 2 Tab (Female)



CD-006
10" X 5" X 1/4"
Corner Plate



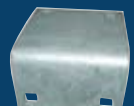
CD-007
10" X 5" X 1/4"
Corner Hinge 1 Tab (Male)



CD-008
10" X 5" X 1/4"
Corner Hinge 2 Tab (Female)



CD-011
10" X 5" X 1/4"
Inside Corner



CD-014
90 Degree Stiffener
Plate



CD-016
Key Hole
Chain Holder



CD-417
1" X 4"
Bolt, Nut and Washer



Cleat Bracket

PRODUCTS & SERVICES

- Aluminum Fender Braces
- Cleats
- Dock Boxes
- Dock Ladders
- Dock Hardware
- Hose Holders
- Floating Docks
- Work Floats
- Mooring Whips
- Power Centers
- Pile Caps
- Pile Restoration Kits & Wraps
- Fish Cleaning Tables
- Marina Trash Containers



Available in
14 sizes
from 6" to 18"
(in 1/2" increments),
in both black
and white.



DOCK CLEATS



High quality cast aluminum-
alloy 356 and available in four
sizes (10", 12", 15" & 18").

ACCESSORIES



AC-002
Dock Corner Bumper



AC-011
3/8" Galvanized Chain/Foot



AC-012
3/8" Galvanized Shackle



AC-013
230 lb. Concrete Anchor

FENDERS

Available in four different
designs: vertical,
horizontal, floating dock,
and small boat, depending on fender
style, the lengths range from 6' to 12' and
available in black, white and gray.



Double-wall fender has an internal high-
energy absorption web that protects the dock
and the vessel from possible damage.

ALUMINUM DOCK LADDERS

High quality
6063 marine
grade aluminum
and available in
six sizes
(3 step through to 8 step).

